



Mirage Liberty™

FULL FACE MASK

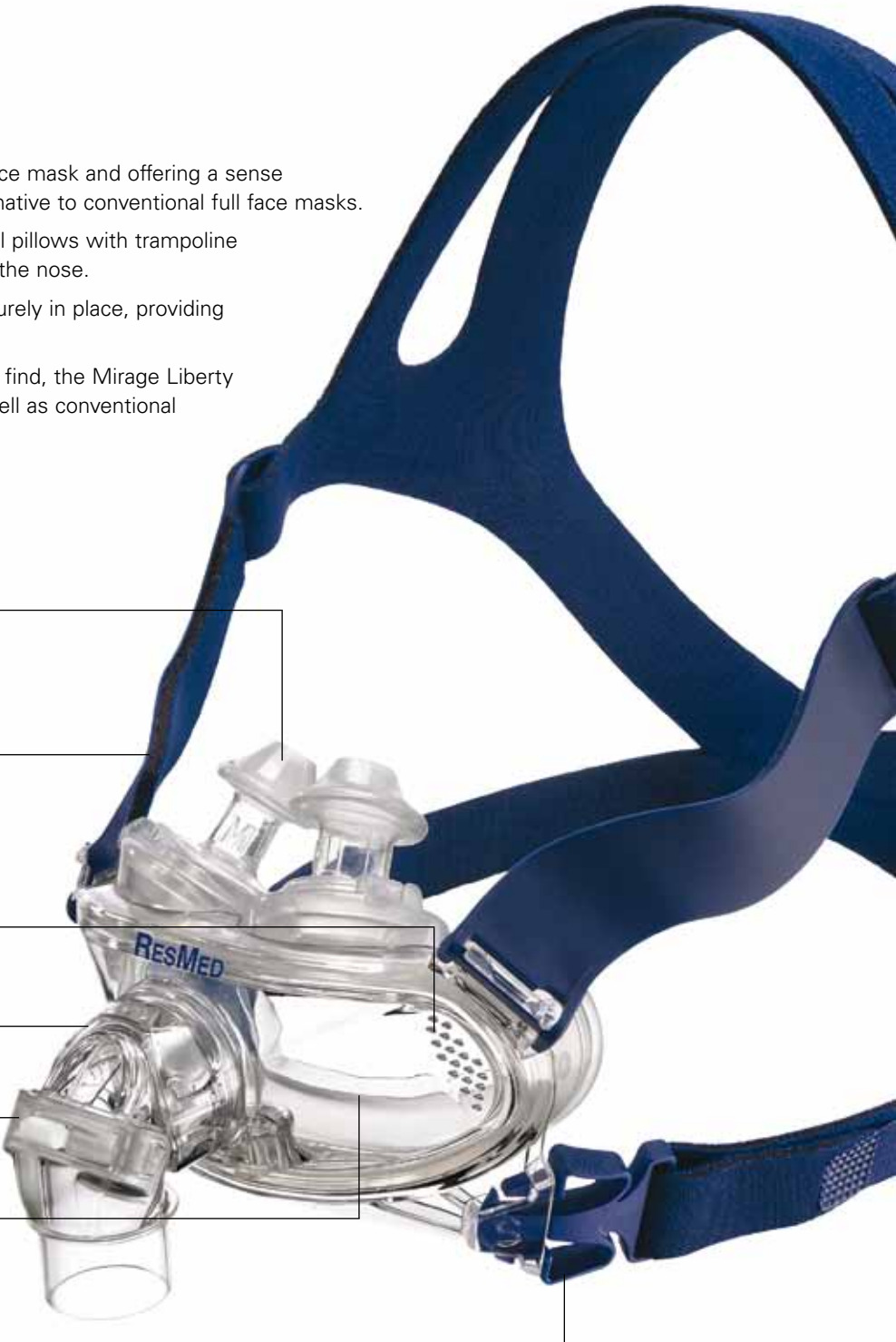
FULL FACE FREEDOM

Minimalist: Bringing minimalist design to a full face mask and offering a sense of freedom, the Mirage Liberty™ provides an alternative to conventional full face masks.

Comfortable: Mirage™ dual-wall cushion and nasal pillows with trampoline action enhance comfort around the mouth and at the nose.

Stable: Supportive headgear keeps the mask securely in place, providing stable performance.

Light: One of the lightest full face masks you can find, the Mirage Liberty weighs considerably less than similar masks as well as conventional full face masks.



Dual-wall nasal pillows with trampoline action — adapt to different nose-to-mouth heights, angles and nasal contours

Supportive headgear — with stabilizing elements stays in shape when removed and provides stability when user moves during sleep

Built-in vents — provide minimal noise output

Quick-release elbow — allows for easy disconnection from mask

Anti-asphyxia valve (AAV) — enhances safety if the airflow to the mask is impeded

Mirage dual-wall cushion — provides exceptional seal and accommodates jaw movement, eliminating need for chin strap

Set-and-forget headgear clips — allow convenient removal of mask

Mirage Liberty™

FULL FACE MASK

TECHNOLOGY HIGHLIGHT

Dual-wall nasal pillows with trampoline action

- Thin outer wall is soft and comfortable; thick inner wall ensures effective seal.
- Airflow between the two walls helps pillows adjust to nasal contours.
- Trampoline action aligns pillows to the angle of the nose and the distance between the nose and mouth.
- Pillows sit gently at the entrance to the nostrils, each moving independently of the other.



Pillows can be aligned to the nose as well as each individual nostril. The pillows can be positioned at various angles to suit individual facial characteristics.



USER BENEFITS

Less mask, more freedom

- Free field of vision
- Freedom to read, watch television and wear glasses
- Less contact with skin, reducing the chances of irritation
- Feels light on the face

Comfort meets performance

- Contoured mouth cushion accommodates jaw movement and mouth leak
- Greater stability and comfort from supportive headgear with stabilizing elements

Making it easier

- Dual-wall mouth cushion and nasal pillows with trampoline action make it easy to achieve a better fit—first time, every time
- Fewer mask parts for easy assembly and disassembly

PROFESSIONAL BENEFITS

Fit range increased

- Full face mask option for over 90% of users (based on studies of different facial types around the world)¹

First-time fit

- Reduces callbacks and mask refitting
- Dual-wall mouth cushion and nasal pillows with trampoline action help fit users the first time, every time

Reduced inventory

- Only two product codes for the complete mask system
- Minimal mask parts



PRODUCT CODES

Mirage Liberty Full Face Mask

(three pillow sizes S, M, L packed with each mask)

| | |
|-------|--------------|
| Small | 61300 |
| Large | 61301 |

¹ Source: Internal ResMed anthropometric data

Components Card

Complete system

| | |
|-----------|-------|
| Small (S) | 61300 |
| Large (L) | 61301 |

Frame assembly (no headgear, cushion or pillows)

| | |
|-----------|-------|
| Small (S) | 61325 |
| Large (L) | 61326 |

Elbow assembly 61340 (elbow, valve and clip)

Frame system (no headgear)

| Cushion | Pillow | |
|-----------|------------|-------|
| Small (S) | Small (S) | 61318 |
| Small (S) | Medium (M) | 61319 |
| Small (S) | Large (L) | 61320 |
| Large (L) | Small (S) | 61321 |
| Large (L) | Medium (M) | 61322 |
| Large (L) | Large (L) | 61323 |

Mouth cushion
S 61330
L 61331

Nasal pillows
S 61333
M 61334
L 61335

Mask frame
S 61337
L 61338

Elbow assembly
(elbow, valve
and clip)
61340

Valve and clip
1 pack 61342
10 pack 61343

Ports cap
2 pack 16570
10 pack 16571

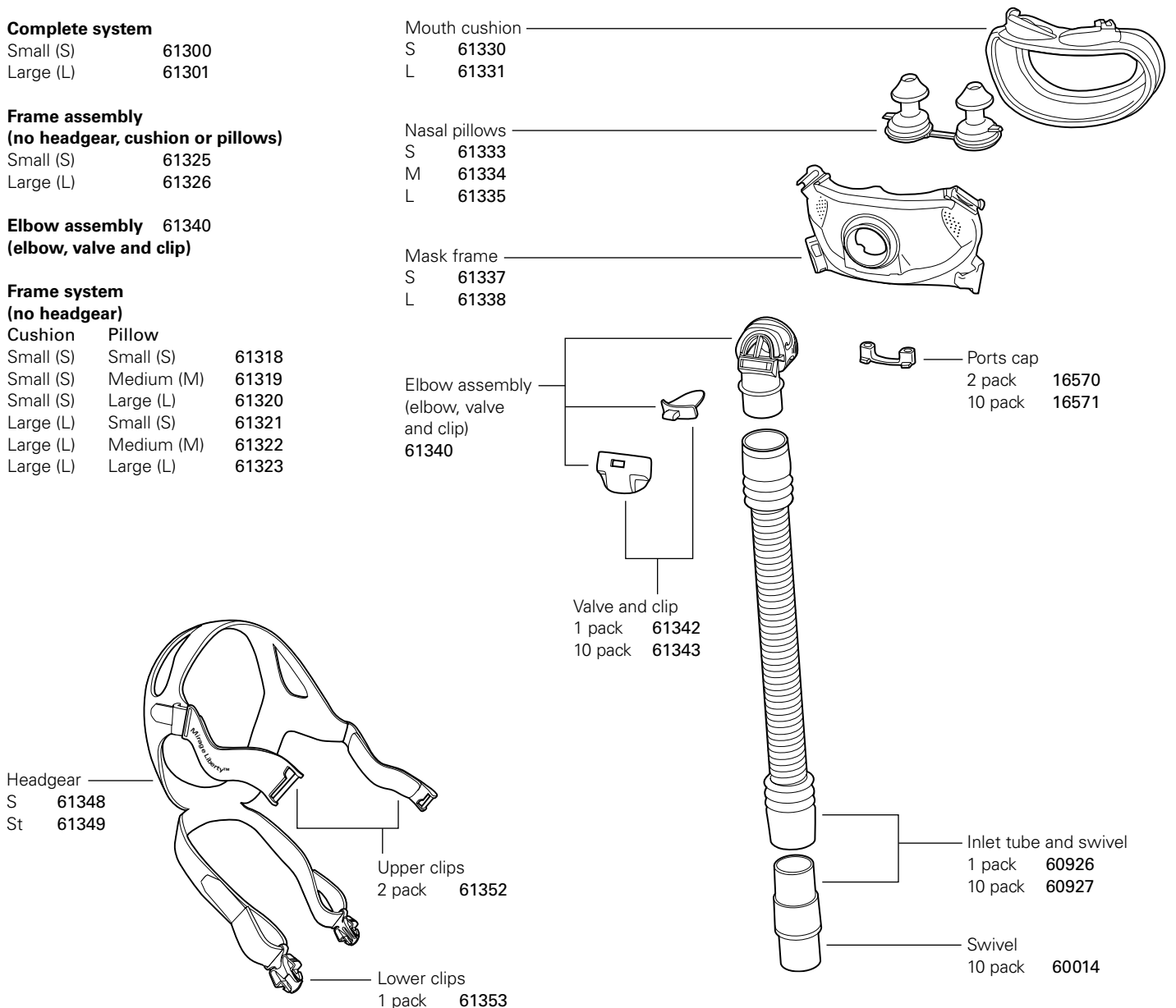
Headgear
S 61348
St 61349

Upper clips
2 pack 61352

Lower clips
1 pack 61353

Inlet tube and swivel
1 pack 60926
10 pack 60927

Swivel
10 pack 60014



Mirage Liberty™

FULL FACE MASK

Fitting Guide



Place the headgear on the head like a cap and pull the mask forward onto the face.

Make sure the headgear fits evenly on the top of the head.



Insert the pillows so that they sit gently at the entrance to the nostrils.

Fit the mask over the mouth.

Fasten the lower headgear clips, ensuring they click into place.



Unfasten the Velcro™ tabs and pull the upper headgear straps evenly.

Do not over tighten the straps.



Unfasten the Velcro tabs and pull the lower headgear straps evenly.

Alternate adjustment of upper and lower straps until a comfortable and even fit is obtained.

Do not over tighten the straps.



If the pillows are incorrectly positioned at the entrance to the nostrils, readjust them. Press them down into the base and then slowly release, guiding them into position.



Connect the elbow on the inlet tube to the frame, ensuring it clicks into place.

Rotate the elbow/swivel to ensure it rotates freely on the frame.

Turn on the flow generator.

If any air leaks are felt, readjust the pillows (as shown in Step 5) and/or the headgear.

⚠ For details, refer to the *Mirage Liberty Full Face Mask User Guide*.